

Richland County

Current Committee Structure

The County leads or is involved with 54 committees, commissions, and boards. Our goal is to consolidate several of the committees we lead into fewer standing committees, per the direction of the Rules Committee in January

- Of the 54 committees, boards and commissions
 - 21 meet monthly or more often
 - 9 meet 1-4 times per year
 - 24 have no published meeting schedule

La Crosse County Example

STANDING COMMITTEES, BOARDS AND COMMISSIONS:

1. Executive Committee 2. Health & Human Services Board 3. Public Works and Infrastructure Committee 4. Judiciary & Law Committee 5. Veterans, Aging and Long Term Care Committee 6. Planning, Resources and Development Committee

SPECIAL COMMITTEES, BOARDS AND COMMISSIONS

1. Aging and Disability Resource Center Advisory Committee 2. Public-Safety Communications Committee 3. Family Policy Board Executive Committee 4. Integrated Support and Recovery Services Advisory Council 5. Criminal Justice Management Council 6. Library Board 7. Board of Adjustment 8. Board of Harbor Commissioners 9. Solid Waste Policy Board 10. Condemnation Commission 11. Farmland Preservation Committee 12. Ethics Board 13. Highway Safety Commission 14. Historic Sites Preservation Commission 15. La Crosse County Housing Authority 16. Local Emergency Planning Committee (LEPC) 17. La Crosse County Economic Development Fund, Inc. 18. Veterans' Service Commission 19. Wildlife Abatement/Damage Committee 20. Commission on Equal Opportunities in Housing 21. Joint City/County Emergency Medical Services Commission 22. Sustainable La Crosse Commission 23. Land Information Council

OTHER ORGANIZATIONAL APPOINTMENTS

1. Aviation Board 2. La Crosse Area Development Corp. (LADCO) 3. La Crosse County Agricultural Society 4. Lake Neshonoc Protection and Rehabilitation District 5. Lake Onalaska Protection and Rehabilitation District 6. Mississippi River Regional Planning Commission (MRRPC) 7. Southwest Badger Resource Conservation and Development (SWRCD) 8. Winding Rivers Library System 9. Couleecap, Inc 10. Wisconsin Counties Utility Tax Association

39 total committees, boards or commissions

The following slides show what
committees are mandatory
by state statute

Mandatory Committees

Board of Health Wis. Stat. §§ 251.03, 251.04

Commission on Aging Wis. Stat. § 46.82(4) - if a county aging program is established under Chapter 46.

Chapters 46 & 51

- Community Programs Board Wis. Stat. § 51.42(4)

- Developmental Disabilities Services Board Wis. Stat. § 51.437(7)

- Social Services Board Wis. Stat. § 46.22(1m)

- Human Services Board Wis. Stat. § 46.23(4) – may be combined with Board of Health under Wis. Stat. § 251.03 and may replace other boards, see statutes for qualification requirements

Emergency Management Committee Wis. Stat. § 323.14(1)(a)

Highway Committee Wis. Stat. § 83.015

Land Conservation Committee Wis. Stat. § 59.70(19)

Local Emergency Planning Committee Wis. Stat. § 59.54(8)

County Park Commission Wis. Stat. § 27.02

Sheriff's Grievance Committee Wis. Stat. § 59.26(8)(b)1

Mandatory Committees Not Clearly Apparent in our Current Structure

Rural Planning Committee Wis. Stat. § 27.019(4) : 27.019(4) (4) County committee. In each county there shall be a county rural planning committee. The committee shall consist of the chairperson of the county board and the chairperson of the county highway committee, and 2 others, to be appointed by the chairpersons every 4 years for a term of 4 years and until a successor is elected and qualified. Terms of appointed members expire on July 1. The chairperson of the county board shall be chairperson of the committee. *NOTE- have not been able to find this committee in any county.

Traffic Safety Commission Wis. Stat. § 83.013(1) : For each county, the county highway commissioner or a designated representative, the chief county traffic law enforcement officer or a designated representative, the county highway safety coordinator, and a representative designated by the county board from each of the disciplines of education, medicine and law and 3 representatives involved in law enforcement, highways and highway safety designated by the secretary of transportation shall comprise a traffic safety commission that shall meet at least quarterly to review traffic accident data from the county and other traffic safety related matters. The county board chairperson, or the county executive or county administrator in a county having such offices, may appoint additional persons to serve as a member of the county traffic safety commission. The commissions shall designate a person to prepare and maintain a spot map showing the locations of traffic accidents on county and town roads and on city and village streets if the population of the city or village is less than 5,000 and to maintain traffic accident data received from cities, villages and towns with a population of 5,000 or more under s. 66.0141. Upon each review, the commission shall make written recommendations for any corrective actions it deems appropriate to the department, the county board, the county highway committee or any other appropriate branch of local government.

Richland County Committees, Commissions & Boards

Those highlighted in green fulfill mandatory
state statute committee requirements

Name	Supervisors	Other members	Frequency of Meetings	notes
Agriculture and Extention Education	5	0	monthly	statute 59.87
Americans with Disability Act Compliance	3	4	?	hear appeals ADA
Audit	3	0	monthly	
Branding			?	temp committee?
Citizen Participation Planning	3	2	infrequently	temp committee
Child Support	3	0	quarterly?	
City/County Ad Hoc	3	0	once per year	
City Library Board	2	0	?	statute43.6(3)
City Park Board	1	0	?	must be a member of County Parks Commission
Commission on Aging and Disability	2	9	monthly	
Committee on Committees	7	0	as needed	
Community Development Block Grant Housing Regional Board	0	1	?	not in committee structure document
Community Developmnt Block Grant Revolving Loan	0	1	?	not in committee structure document
Comprehensive Community Services Coordination	0	9	monthly	
Continuus	1?	0	?	Not in committee assignment spreadsheet

Name	Supervisors	Other members	Frequency of Meetings	notes
County Parks Commission	4	3	monthly	statutes 27.02-27.06
Courthouse Security	2	0	infrequently	not in committee structure document
Criminal Justice Coordination Committee	1	12	?	has this committee ever met?
Economic Development (RED) Board	1	2	roughly every other month	Not in committee assignment spreadsheet, also includes a "Rotating Advisory Board"
Emergency Management	3	0	twice per year	statute 166.03(4) c
Fair and Recycling	4	3	mostly monthly, except September during fair	1989 WI Act 335 (recycling)
Finance and Personnel	7	0	twice per month	only mandatory because of Sheriff grievance body
Health and Human Services Board	4	3	monthly	statutes 51.42, 51.437, chapter 251, 46.22 (2),
Hidden Valleys Board	1	0	?	
Highway and Transportation	5	0	monthly	statutes 83.015
Housing Authority	2?	3	?	HUD grants, CDBG- not in committee assignment spreadsheet

Name	Supervisors	Other members	Frequency of Meetings	notes
Joint Ambulance	2	14	quarterly	
Joint Ambulance Subcommittee	1?	4?		not in committee structure document
Land Conservation	5	1*	monthly	*must be FSA member, 2 supervisor members must be on Ag and Ext.
Land Information Council	1	7?		
Law Enforcement and Judiciary	5	0	monthly	
Local Emergency Planning	3	21	twice per year	Federal law, Superfund Amendments and Reauthorization Act (SARA)
Lone Rock Library Board	?	?	?	statute 43.6 (3), not in committee assignment spreadsheet
Mississippi Valley Health Services Commission	1	0?		supervisor must also be on HHS board- current wording says that the rep will be a supervisor member of HHS board, we have a non supervisor as primary rep right now
Neighborhood Housing Services of SW WI	1	0?		
Nutrition Advisory Council	1	6?		
Pine Valley Healthcare & Rehabilitation Board of Trustees	4	1	monthly	statute 46.18

Name	Supervisors	Other members	Frequency of Meetings	notes
Property, Building and Grounds	5	0	monthly	
Richland County Housing Authority and CBGC	2	3	?	not in committee structure document
Rules and Resolutions Committee & Ethics Board	5	0	monthly	Ord. 99-11, Ord. 06-28
Southwest Badger Resource Conservation and Dev. Council Inc	2	0	n/a	No longer exists, should be removed from committee structure document
Southwest Wisconsin Community Action Program (SWCAP)	2	0	?	only have one supervisor assigned to this committee but structure document says 2 supervisors
Southwest Wisconsin Library System Board	1	1	?	
Southwest Wisconsin Regional Planning Commission	2	1	6 times/year	
Strategic Planning Committee	5	0	twice per month now, quarterly in future?	not in committee structure document
Symons Natatorium Board	3	1	monthly	

Name	Supervisors	Other members	Frequency of Meetings	notes
Transportation Coordinating Committee	3		8 monthly	statutes 85.12, 85.22, ADA 1990 42 USC 12101 et seq.
Tri-County Airport Commission	2		5 ?	statues 114.11-114.141, Ord. 83-3
Tri-County Airport Board of Appeals	0		3 ?	not in committee structure document
UW Platteville-Richland	5		0 monthly	
Veterans Service Commission	3		2 monthly	statutes 45.81(1), 45.81 (3)
Viola Library Board	1		0 ?	statute 43.6 (3)
Zoning Board of Adjustment	0		3 ?	not in committee structure document
Zoning and Land Information	5		0 monthly	statutes chapter 91

NOTES: *minutes are not present on website for all posted meetings with agendas
 ? No agendas or minutes available for these meetings- should that be happening? Open meetings requirements?

Questions for consolidation of committees:

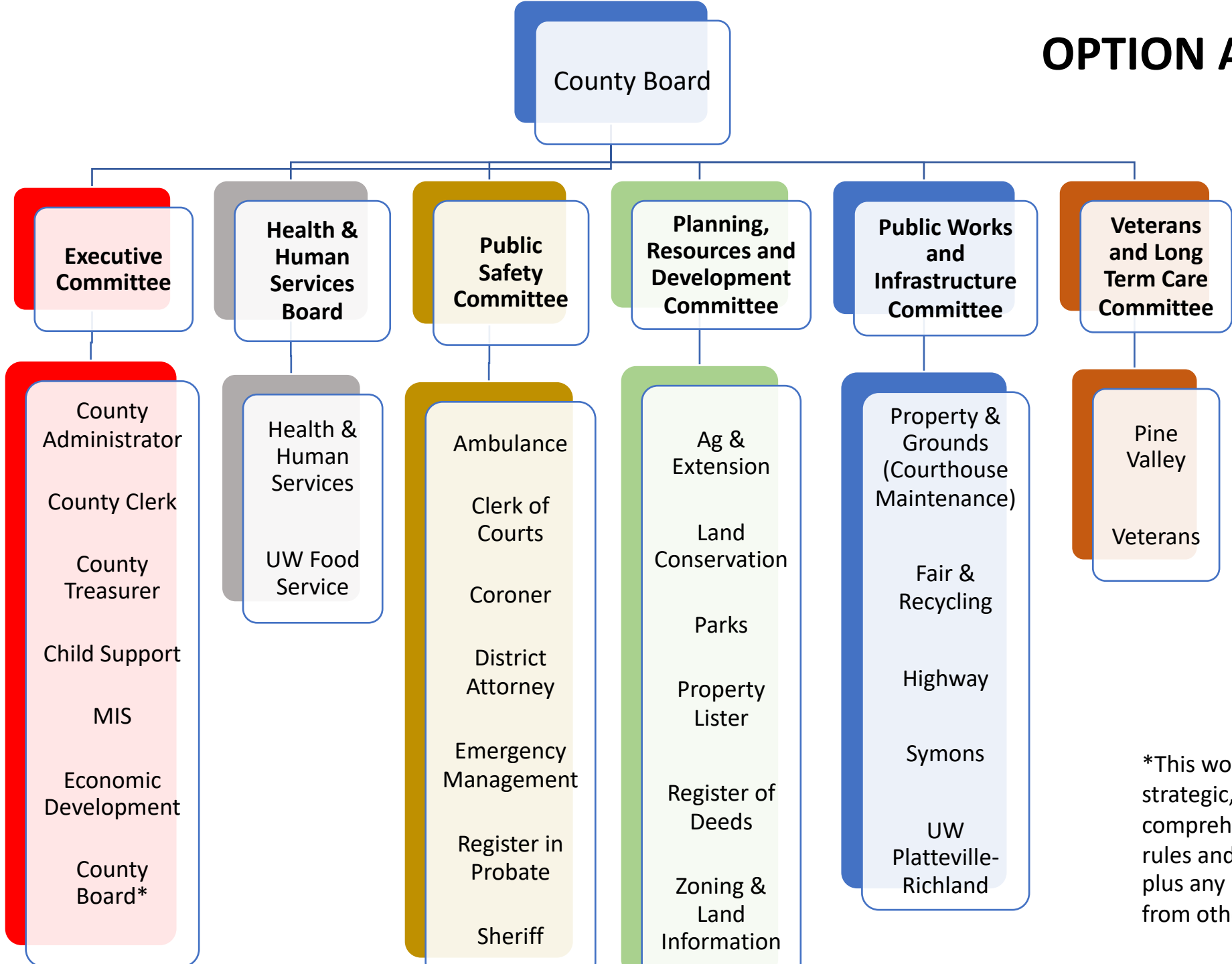
1. How long will committee meetings take? La Crosse and Ozaukee said 60-90 min
 - if department doesn't have anything important to discuss, they don't come to meeting
 - focus on policy development, if department is only reporting they don't come
 - could choose 2-3 departments to focus on each meeting for reporting of how department is doing, rest of meeting spent on issues/policy
2. La Crosse County has full board policy planning meeting every month where they take no action but are presented with current issues from all committees with chance to discuss and ask questions so when comes to voting they know the issue. Should we consider this option?
3. Bills oversight- checks and balances? If someone is defrauding the county how would that get discovered? Accounting supervisor? Accounts payable specialist? How do we think it gets discovered now—audit committee? during the official audit?

Potential pros for consolidation of committees:

1. Gives supervisors the ability to attend all committee meetings so are better informed of issues across the county
2. Requires the committee to focus on policy, rather than day to day operations
3. La Crosse and Ozaukee put “Future Agenda Items” on all committee agendas so every supervisor has the ability to get issues on agendas.

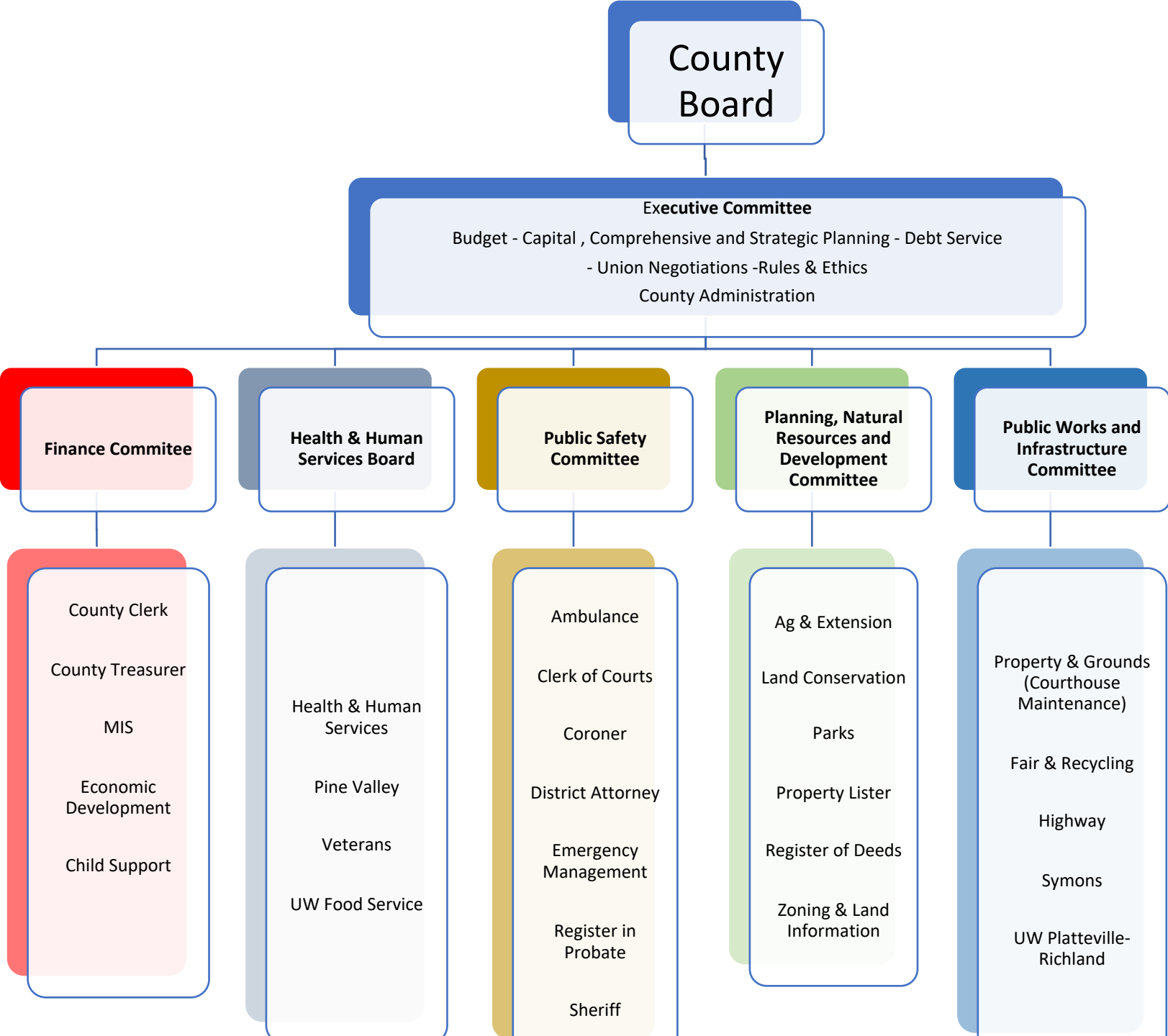
Departments:
Administrator ✓
Parks ✓
Ambulance ✓
Pine Valley ✓
Child Support ✓
Fair & Recycling
Circuit Court ✓
Register of Deeds ✓
County Clerk ✓
Sheriff ✓
HHS ✓
Symons
Highway ✓
Treasurer ✓
Economic Devel ✓
Veterans ✓
Emergency Mng ✓
Zoning ✓
Extension ✓
Food Service ✓
Land Conservation ✓
MIS ✓
Property Lister ✓

OPTION A



*This would include capital, strategic, and comprehensive planning; rules and ethics; budget plus any issues brought from other committees

OPTION B



- Departments:
- Administrator ✓
 - Ambulance ✓
 - Child Support ✓
 - Circuit Court ✓
 - County Clerk ✓
 - HHS ✓
 - Highway ✓
 - Economic Devel. ✓
 - Emergency Mng ✓
 - Extension ✓
 - Land Conservation ✓
 - MIS ✓
 - Parks ✓
 - Property Lister ✓
 - Pine Valley
 - Fair & Recycling ✓
 - Register of Deeds ✓
 - Sheriff ✓
 - Symons ✓
 - Treasurer ✓
 - UW Richland Maint. ✓
 - UW Food Service ✓
 - Veterans Services ✓
 - Zoning ✓

Standing Committees *	Special Appointment Bodies (reports to) *	Advisory Bodies (reports to) *
Executive	City Library Board (Executive)	ADA Compliance (Public Works)
Finance	City Park Board (Natural Resources)	Aging & Disability (Health & Human Services)
Health & Human Services	Mississippi Valley Health Services (Health & Human Services)	Coordinated Service Team Coordinating (Health & Human Services)
Natural Resources	Neighborhood Housing Services (Health & Human Services)	Criminal Justice Coordinating (Public Safety)
Public Safety	County Housing Authority (Health & Human Services)	Joint Ambulance (Public Safety)
Public Works	Southwest WI CAP (Health & Human Services)	Land Information (Natural Resources)
	SW WI Library System (Executive)	Nutrition Advisory (Health & Human Services)
	SW WI Regional Planning (Executive)	Transportation Coordinating (Health & Human Services)
	Symons Natatorium (Public Works)	Veterans Service Commission (Health & Human Services)
	Tri-County Airport (Public Works)	Zoning Board of Adjustment (Natural Resources)
	Viola Library Board (Executive)	
	Economic Development (Finance)	

* County Board Chair makes all supervisor appointments (with County Board confirmation), Administrator makes all citizen appointments (with County Board confirmation)

Possible Committee Assignments

Board Chair only on Executive Committee

Board Vice-chair on Executive and Finance Committees

Each remaining supervisor assigned to 2 standing committees

EXECUTIVE		Finance	HHS	Public Safety	Natural Resources	Public Works
Board Chair		Board Vice Chair	Supervisor 3	Supervisor 3	Supervisor 4	Supervisor 4
Board Vice Chair		Supervisor 5	Supervisor 5	Supervisor 6	Supervisor 6	Supervisor 7
Chair Finance		Supervisor 7	Supervisor 8	Supervisor 8	Supervisor 9	Supervisor 9
Chair HHS		Supervisor 10	Supervisor 10	Supervisor 11	Supervisor 11	Supervisor 12
Chair Public Safety		Supervisor 12	Supervisor 13	Supervisor 13	Supervisor 14	Supervisor 14
Chair Planning		Supervisor 15	Supervisor 15	Supervisor 16	Supervisor 16	Supervisor 17
Chair Public Works		Supervisor 17	Supervisor 18	Supervisor 18	Supervisor 19	Supervisor 19
		Supervisor 20	Supervisor 20	Supervisor 21	FSA member	Supervisor 21

Potential Committee Makeup & Responsibility

Executive Committee Members

County Board Chair

County Board Vice-Chair

Chair Finance Committee

Chair HHS Committee

Chair Public Safety Committee

Chair Public Works Committee

Chair Natural Resources Committee

Duties: annual budget; capital, comprehensive & strategic planning; rules & ethics; union negotiations; corp. counsel; debt service; county administrator; issues brought forth by all standing committees

Finance Committee

8 supervisors (one is board vice-chair)

Departments Reporting to Committee:

County Clerk

County Treasurer

Finance Staff

MIS

Economic Development

Child Support

Policy Issues: elections, investments, fiscal policy, personnel, IT, child support

Health & Human Services Board

8 supervisors

Departments Reporting to Committee:

Human Services

Public Health

ADRC

Pine Valley

Veterans

Policy Issues: mental health, senior services, long-term care, veteran services, communicable diseases, alcohol and drugs

Public Safety Committee

8 supervisors

Departments Reporting to Committee:

Ambulance

Clerk of Courts

Coroner

District Attorney

Emergency Management

Register in Probate

Sheriff

Policy Issues: court system, jail and patrol, emergency response and mitigation strategy

Planning, Natural Resources & Development Committee

8 supervisors

Departments Reporting to Committee:

Extension

Land Conservation

Property Lister

Parks

Register of Deeds

Zoning and Land Information

Policy Issues: sanitation and land use, GIS, 4-H, resource management, planning, farmland preservation

Pubic Works Committee

8 supervisors

Departments Reporting to Committee:

Property & Grounds Staff

Fair & Recycling

Highway

Symons

UW Platteville-Richland

Policy Issues: road maintenance and construction, fairgrounds, county building maintenance and upkeep