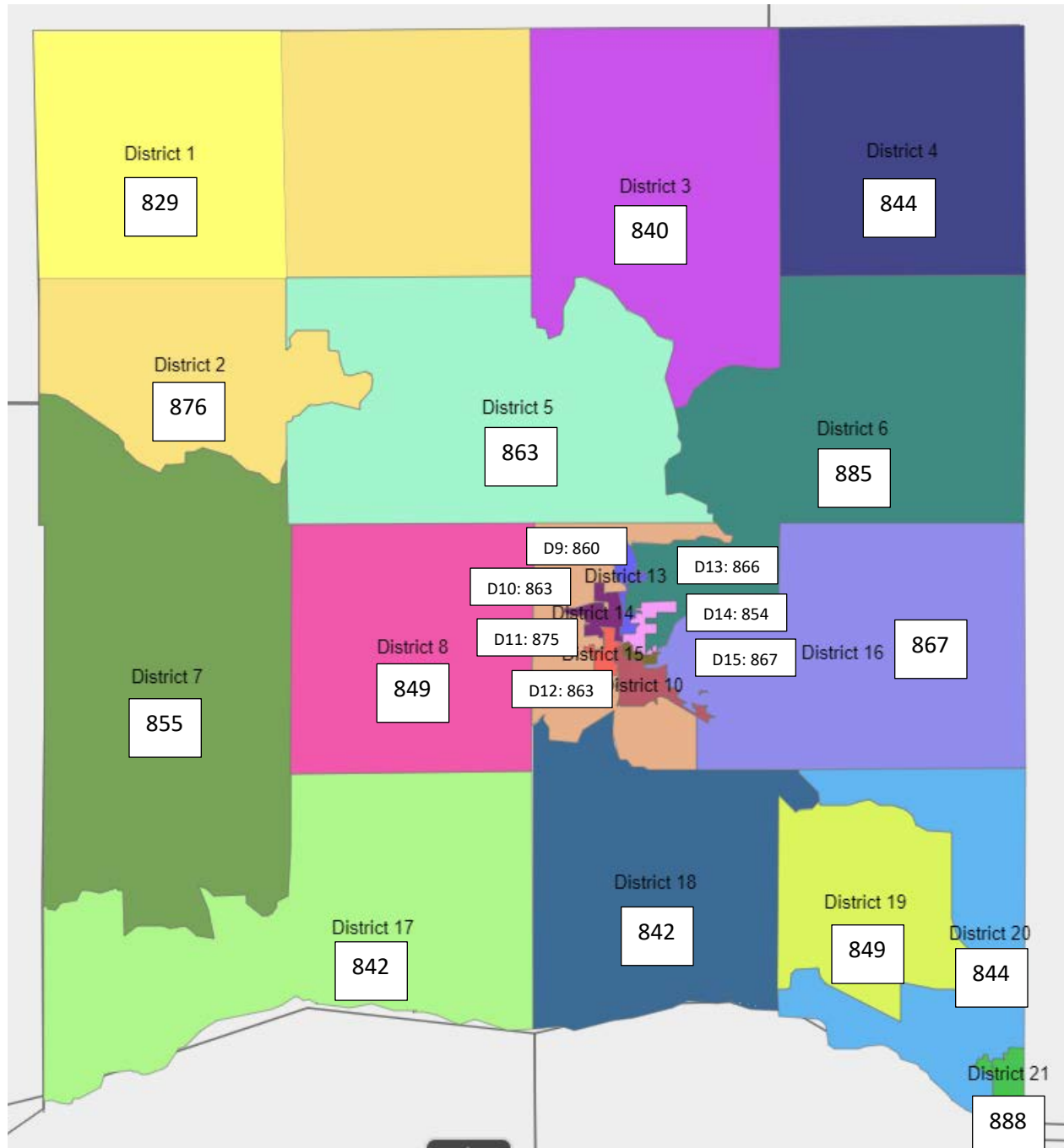
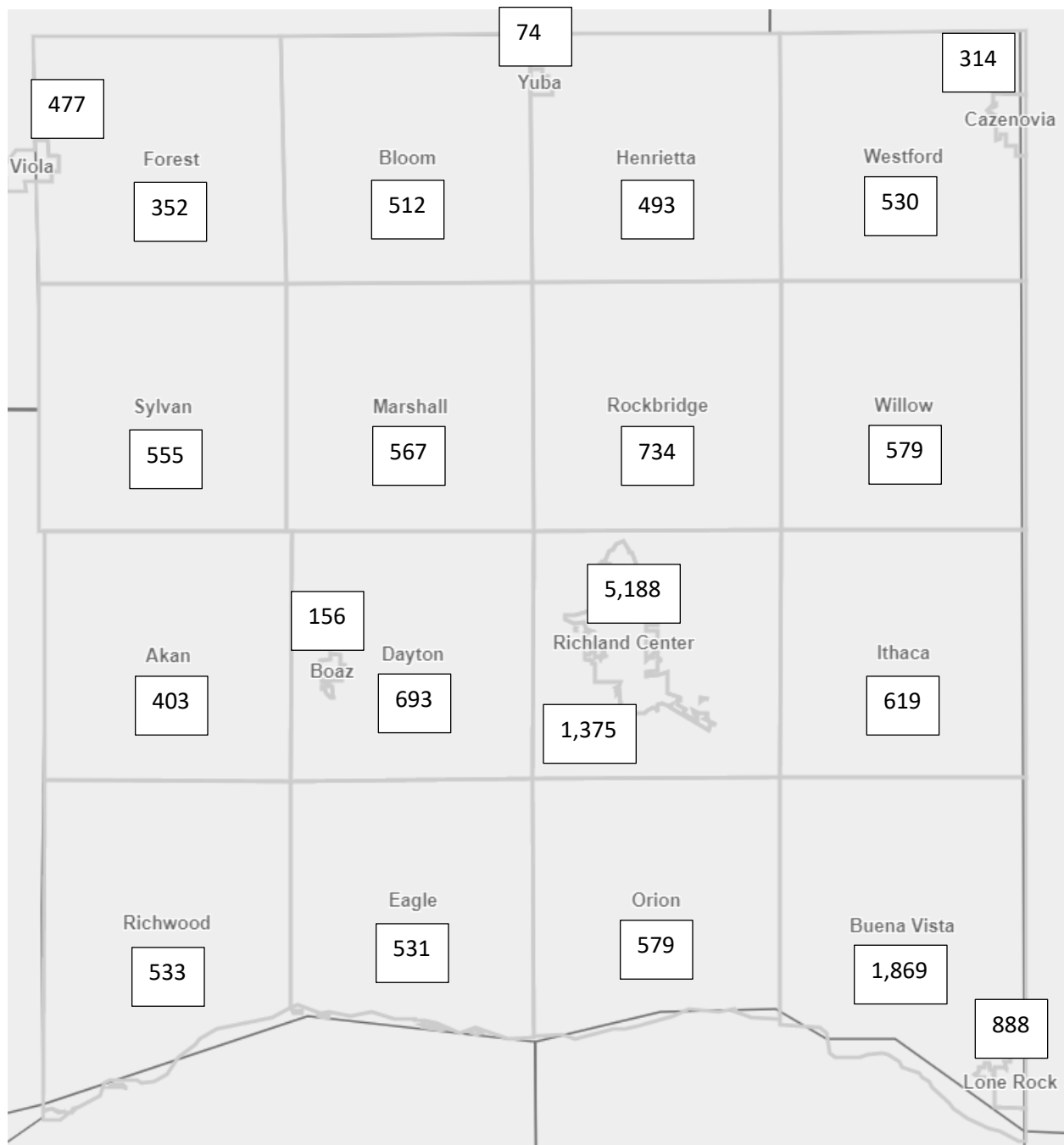


## Richland County Board Size

Richland County supervisory districts are divided so that roughly the same number of people are represented by each seat. In the 2010 Census, the population of Richland County was 18,021. Dividing the total population by 21 seats, each seat represents an average of 858 people ( $18,021/21$ ). The actual number of people in each district ranges from 829 to 888, or a deviation of 6.9% ( $58/858 = 6.9\%$ ). It is generally accepted that a deviation of 10% allows for equal representation, meaning the range after the 2010 census could have been up to 86 people ( $858*10\%$ ).

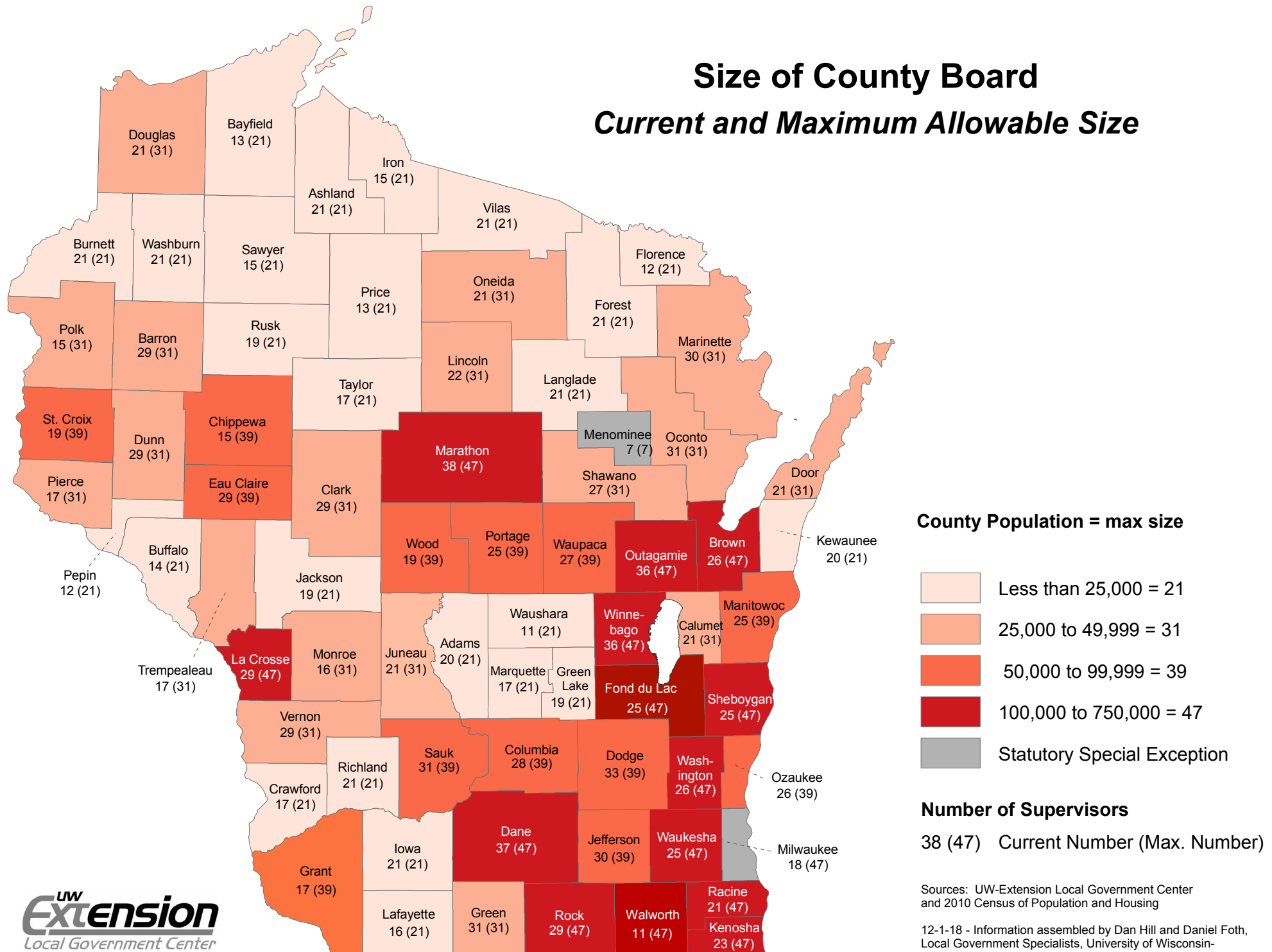


Because the population in almost none of Richland County's municipalities fall between the acceptable range, they are combined and/or split to create districts closer to the average (the Village of Lone Rock was the only exception).



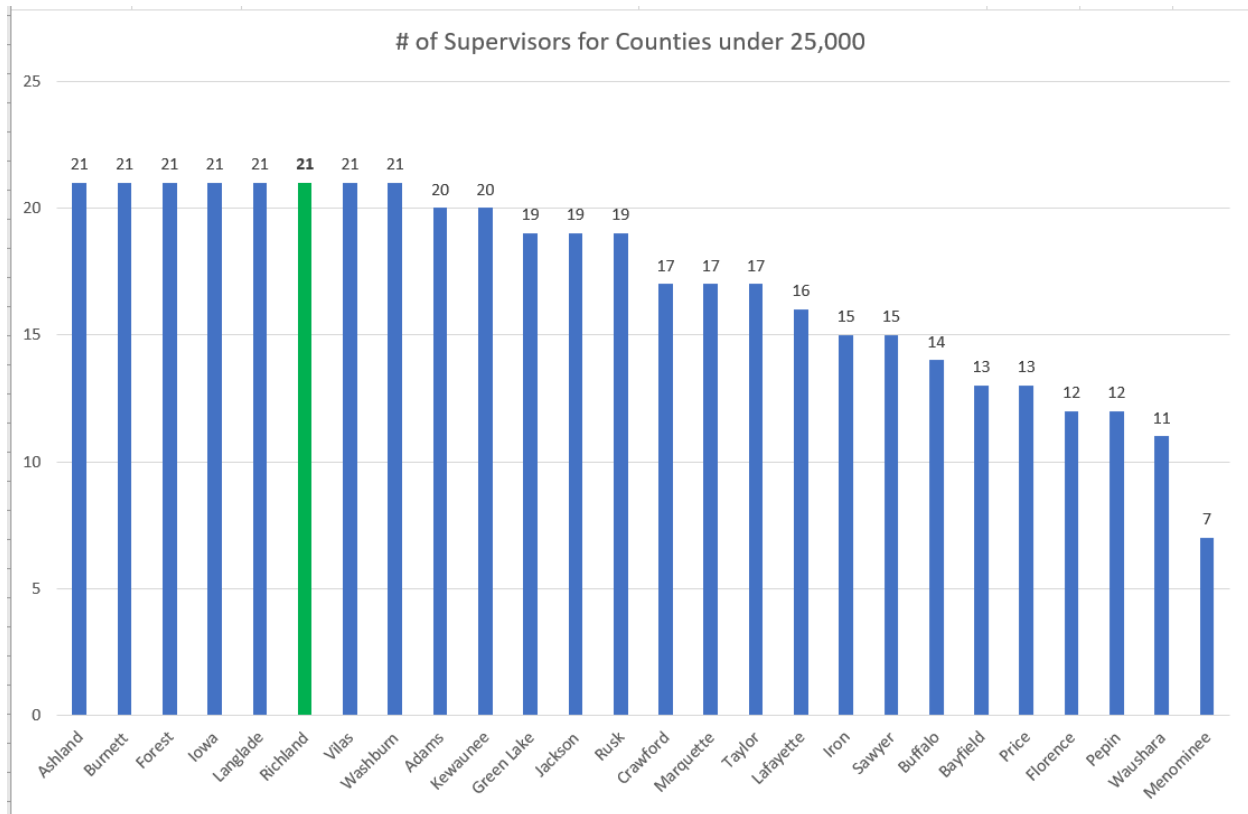
In order to redraw supervisory district lines later in 2021, the County Board needs to determine the number of seats desired for the following decade (2022 to 2031). The map on the following page shows the size of County Boards across Wisconsin, by current number and maximum allowed. Since Richland County has a population of less than 25,000, the maximum number of County Board seats allowed is 21.

### ***Current and Maximum Allowable Size***



26 out of Wisconsin's 72 counties have a population of 25,000 or less. The average number of County Board supervisors in these 26 counties is 17. Eight out of these 26 counties have 21 County Board supervisors (the maximum allowed), while the remaining 18 counties have between 7 and 20 County Board seats.

County	Population	# of Supervisors for Counties under 25,000	Average Constituents per Supervisor
Ashland	16,000	21	762
Burnett	15,000	21	714
Forest	9,000	21	429
Iowa	14,000	21	667
Langlade	20,000	21	952
<b>Richland</b>	<b>18,000</b>	<b>21</b>	<b>857</b>
Vilas	21,000	21	1,000
Washburn	16,000	21	762
Adams	21,000	20	1,050
Kewaunee	21,000	20	1,050
Green Lake	19,000	19	1,000
Jackson	21,000	19	1,105
Rusk	15,000	19	789
Crawford	17,000	17	1,000
Marquette	15,000	17	882
Taylor	21,000	17	1,235
Lafayette	17,000	16	1,063
Iron	6,000	15	400
Sawyer	17,000	15	1,133
Buffalo	14,000	14	1,000
Bayfield	15,000	13	1,154
Price	14,000	13	1,077
Florence	4,000	12	333
Pepin	7,000	12	583
Waushara	25,000	11	2,273
Menominee	4,000	7	571
<b>Average</b>	<b>15,462</b>	<b>17</b>	<b>917</b>



If the size of the Richland County Board were to be reduced, one of the impacts would be the number of people represented by each Supervisor.

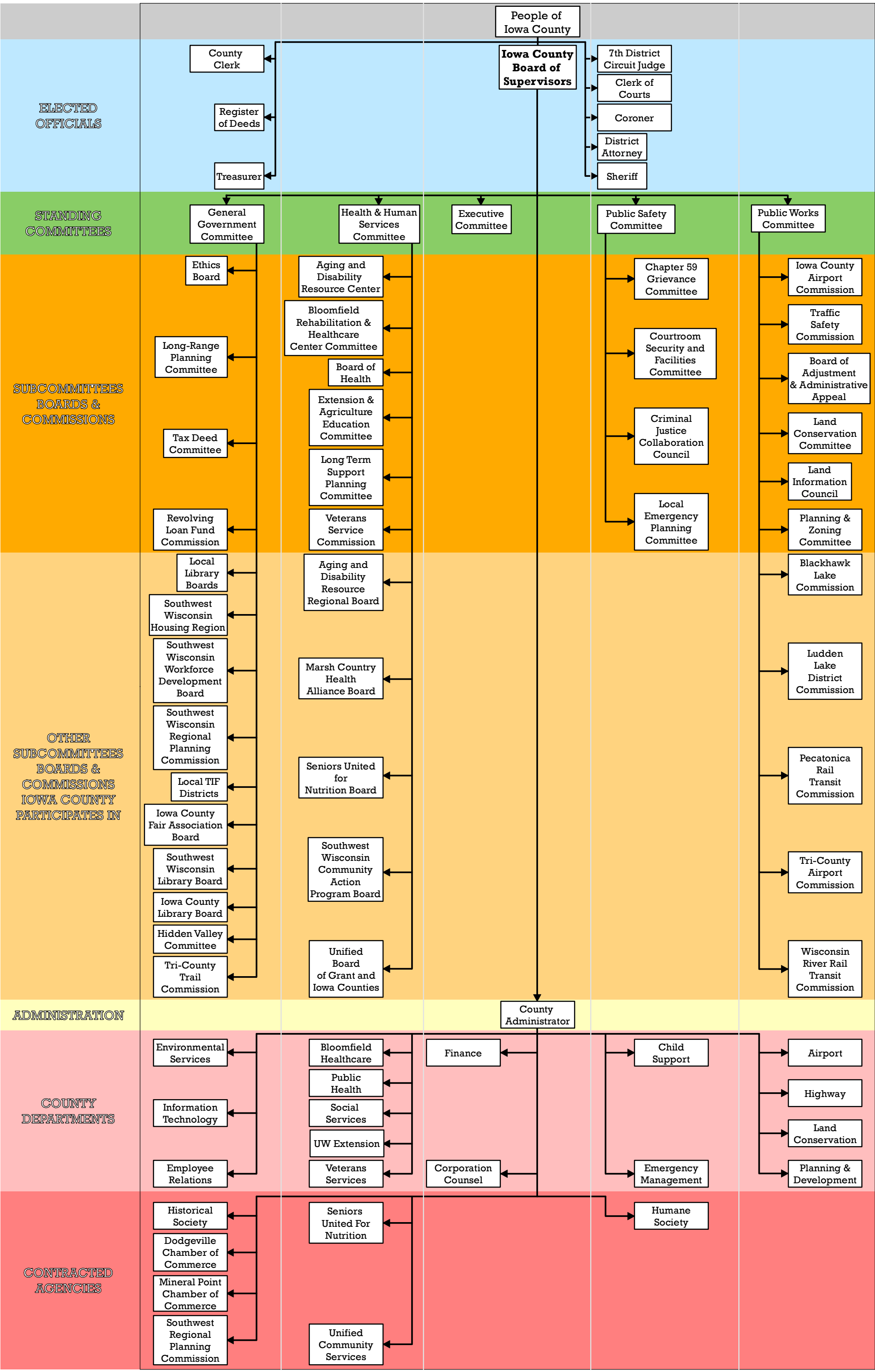
# of Districts	# of Constituents per District
21	857
19	947
17	1,059
15	1,200
13	1,385
11	1,636

County	Population	# of Supervisors for Counties under 25,000	Average Constituents per Supervisor
Waushara	25,000	11	2,273
Taylor	21,000	17	1,235
Bayfield	15,000	13	1,154
Sawyer	17,000	15	1,133
Jackson	21,000	19	1,105
Price	14,000	13	1,077
Lafayette	17,000	16	1,063
Adams	21,000	20	1,050
Kewaunee	21,000	20	1,050
Vilas	21,000	21	1,000
Green Lake	19,000	19	1,000
Crawford	17,000	17	1,000
Buffalo	14,000	14	1,000
Langlade	20,000	21	952
Marquette	15,000	17	882
<b>Richland</b>	<b>18,000</b>	<b>21</b>	<b>857</b>
Rusk	15,000	19	789
Ashland	16,000	21	762
Washburn	16,000	21	762
Burnett	15,000	21	714
Iowa	14,000	21	667
Pepin	7,000	12	583
Menominee	4,000	7	571
Forest	9,000	21	429
Iron	6,000	15	400
Florence	4,000	12	333
<b>Average</b>	<b>15,462</b>	<b>17</b>	<b>917</b>

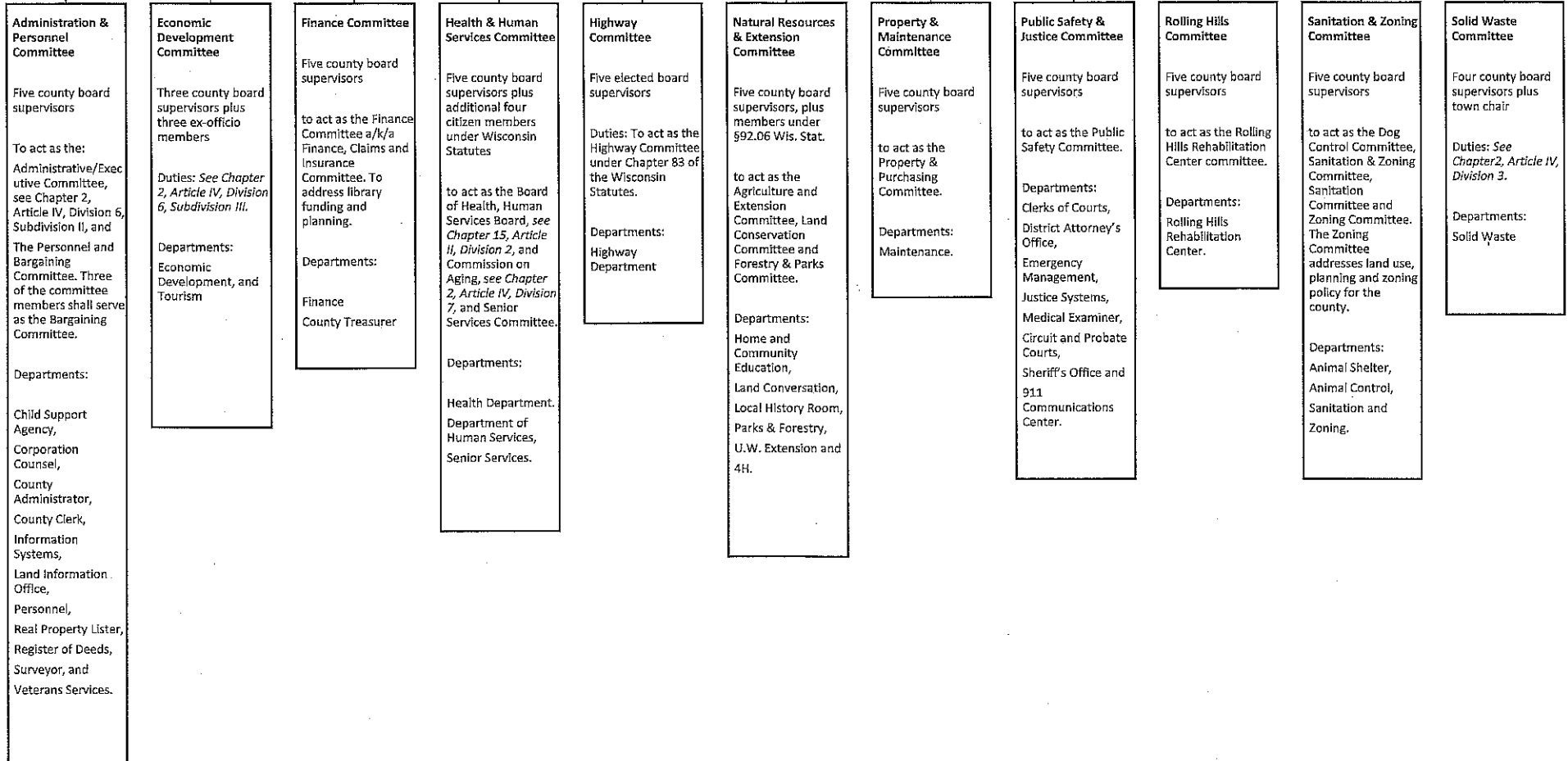
Another impact would be the number of committees/boards/commissions on which each County Board supervisor would serve (data was gathered off available websites and likely includes errors):

Committee/Board/Commission	# of Meetings in 2020	# of Supervisor Committee Seats	# of Supervisor-Meetings
Finance & Personnel	19	7	133
Highway	17	5	85
Fair & Recycling (2019)	21	4	84
Land Conservation	14	5	70
Law Enforcement Judicial	14	5	70
Health & Human Services	15	4	60
Parks	14	4	56
Property	11	5	55
Rules & Resolutions	11	5	55
Pine Valley	13	4	52
Zoning	10	5	50
Agriculture & Extension	8	5	40
UW-Richland	7	5	35
Symons Natatorium	10	3	30
Audit	9	3	27
City Library Board (est. meetings)	12	2	24
Committee on Committees	3	7	21
Veterans Service	6	3	18
Joint Ambulance	8	2	16
Administrative Transition	3	5	15
City Park Board (est. meetings)	12	1	12
Child Support	4	3	12
Aging and Disability	9	1	9
Transportation Coordinating	3	2	6
Emergency Management	2	3	6
Economic Development	5	1	5
City-County Ad Hoc	1	3	3
Chapter 980	11		0
Coordinated Services Team (CCS)	3		0
Coordinated Services Team (CST)	3	0	0
Local Emergency Planning	2		0
Center FOCUS	0		0
Courthouse Security	0	2	0
Hidden Valleys	0	1	0
KIDS Council	0		0
Neighborhood Housing Services		1	0
Nutrition Advisory		1	0
Tri-County Airport		2	0
Viola Library		1	0
<b>Total</b>	<b>280</b>	<b>110</b>	<b>1049</b>
<b>Average per Supervisor (Existing)</b>		<b>5.2</b>	<b>50</b>
<b>Average per Supervisor (19)</b>		<b>6</b>	<b>55</b>
<b>Average per Supervisor (17)</b>		<b>6.5</b>	<b>62</b>
<b>Average per Supervisor (15)</b>		<b>7.3</b>	<b>70</b>
<b>Average per Supervisor (13)</b>		<b>8.5</b>	<b>81</b>
<b>Average per Supervisor (11)</b>		<b>10</b>	<b>95</b>

However, some counties have organized existing committees/boards/commissions into standing committees, as shown in the 3 following examples from Iowa, Monroe, and Washington Counties. In Monroe County, this organization was tied to a reduction in County Board supervisor seats. In Iowa County, a reduction in County Board supervisor seats did not occur and was unrelated to a “standing committee” form of organization.



# Monroe County Board



# Washington County Organizational Chart

