



Engineering & Architectural Services -

New Emergency Services Facility Project
Richland Center, Wisconsin

Date: October 25, 2000

Submitted By:
Delta 3 Engineering, Inc.

875 S. Chestnut Street
Platteville, WI 53818
(608) 348-5355

898 Jackson Street
Dubuque, IA 52001
(563) 542-9005

EVERY ANGLE COVERED





► Platteville, Wisconsin
► Dubuque, Iowa

P 608.348.5355
P 563.542.9005

E mail@delta3eng.biz
W www.delta3eng.biz

October 28, 2020

Darin Gudgeon
Richland County Ambulance Service
181 W. Seminary Street
Richland Center, WI 53581

**Re: Request for Proposals – Engineering and Architectural Services
New Emergency Services Facility Project**

Dear Mr. Gudgeon,

On behalf of Delta 3 Engineering, Inc., I am pleased to present our statement of qualifications for the Engineering and Architectural Services for the New Emergency Services Facility Project. We are very interested in being a part of this exciting project and look forward to working with the private donor, Joint Ambulance Committee members, Ambulance Service staff, contractors and subcontractors to make this project a success. With so many different stakeholders in this project, our collaboration with all team members will be extremely interactive throughout the design and construction process to ensure all needs are being addressed and met.

Delta 3 is a full-service architecture and engineering firm with offices located in Platteville, Wisconsin and Dubuque, Iowa. Our 30+ employees pride themselves on the completeness and careful coordination of design needs for any size and scope of project. Since our founding in 2003, we have designed and supervised construction projects ranging from a few thousand dollars to millions of dollars. These projects include renovations and new construction for police stations, fire stations, village/city halls, community centers, schools, and libraries throughout the Tri-State area. Because we are a smaller firm, the success of every project is important to us and our attention to detail is evident throughout the design and construction process.

Delta 3 Engineering has extensive experience in the design and construction of wood frame commercial structures similar to the facility that is outlined in the Request for Proposal. We offer diverse services that allow us to coordinate all design in-house. This allows us to carefully coordinate the design process, making it accurate and efficient. Starting with the initial architectural design layouts, we provide in-house coordination of the structural requirements mechanical, electrical and plumbing systems. We perform regular constructability reviews on our projects to simplify the construction process and keep construction costs to a minimum. For this project, Delta 3 team members will include Tammy Black, AIA, LEED Green Associate (Architect/Project Manager) as the point of contact providing project coordination, Scott Chyko, PE, (Principal-in-Charge/Structural Engineer), Jason Schweitzer, PE, SE, (Structural Engineer), Joe Bailie (Construction and MEP Specialist), Dan Dreessens, PE (Civil Engineer)

October 28, 2020

and James Reiter, PLS (Professional Land Surveyor). Additional staff will be utilized for drafting and advisement.

Delta 3 has the same approach to each new endeavor, no matter how large or small: we listen closely to the client and provide superior design through construction administration services. Our goal is to provide services focused on collaborative communication and teamwork to facilitate the completion of a quality project.

Please let me know if you need any additional information regarding this letter of interest. Feel free to contact me at (608) 348-5355 or blackt@delta3eng.biz. We hope you see understand the value our experience and team can bring to your project.

Sincerely,



Tammy S. Black, AIA, LEED Green Associate
Architect/ Project Manager
Delta 3 Engineering, Inc.

EVERY ANGLE COVERED

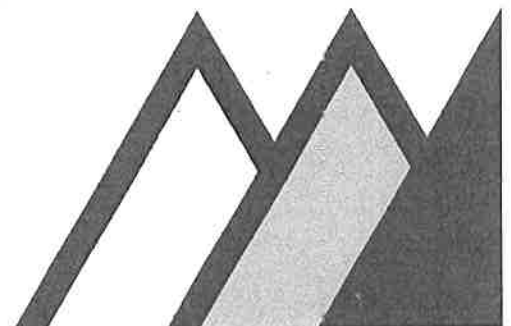




TABLE OF CONTENTS

A – FIRM OVERVIEW & PROFILE

B – FIRM SERVICES

C – SIMILAR EXPERIENCE

D – TEAM MEMBERS

E – PROOF OF INSURANCE

F – FEES & COMPENSATION

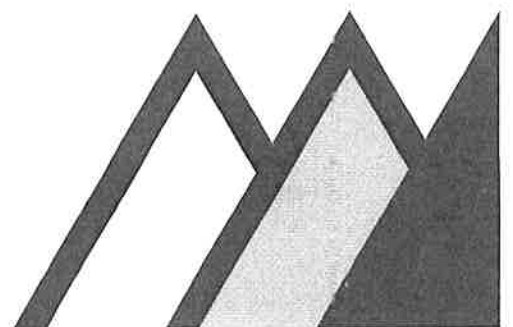


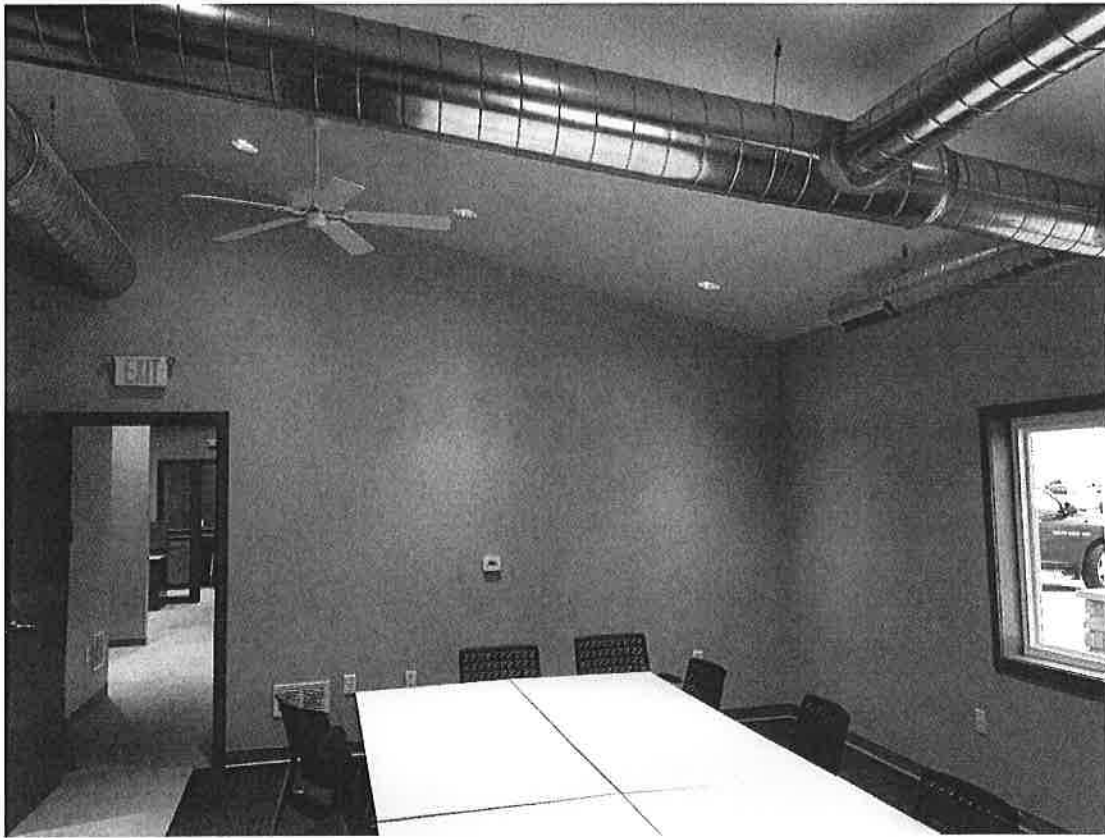
4 - **DELTA 3** - Richland Center Emergency Services Facility



FIRM OVERVIEW & PROFILE

EVERY ANGLE COVERED





6 - **DELTA 3** - Richland Center Emergency Services Facility - 6



FIRM PROFILE

Delta 3 Engineering was founded in November 2003 by Scott Chyko, Dan Dreessens, and Bart Nies. We started with five employees but have since grown to a team of 30+. In 2014, Delta 3 Engineering purchased Southwest Design Associates, which had been in business since 1977.

The following is a breakdown of our current staff:

- Registered Professional Engineers, Civil – 5
- Registered Professional Engineers, Structural – 2
- Registered Architects – 1
- Engineers-In-Training, Civil – 5
- Engineer-In-Training, Structural – 1
- Registered Land Surveyors – 2
- Engineering/CAD Technicians – 11
- Administrative – 3

We have worked with over 40 municipalities throughout the tri-state area to provide first-rate, innovative design and consulting services. Our architects and engineers work closely with you to incorporate your goals and ideas into a high-quality design that will be an asset to your community for many years.

***WE PRIORITIZE
COMMUNICATION***

To eliminate communication barriers, a single architect or engineer leads your project from start to finish. This team member works with you to establish goals, address needs, find solutions, and ensure your project stays on track.

***WE DESIGN
WITH YOU IN MIND***

We create solutions that fit your budget, comply with state and federal regulatory codes, and meet accessibility requirements.

***WE BUILD
LONG-LASTING RELATIONSHIPS***

Our engineers and architects have developed professional relationships with many municipalities and state and federal regulatory agencies. As a result, we're able to keep projects moving in a timely and efficient manner.

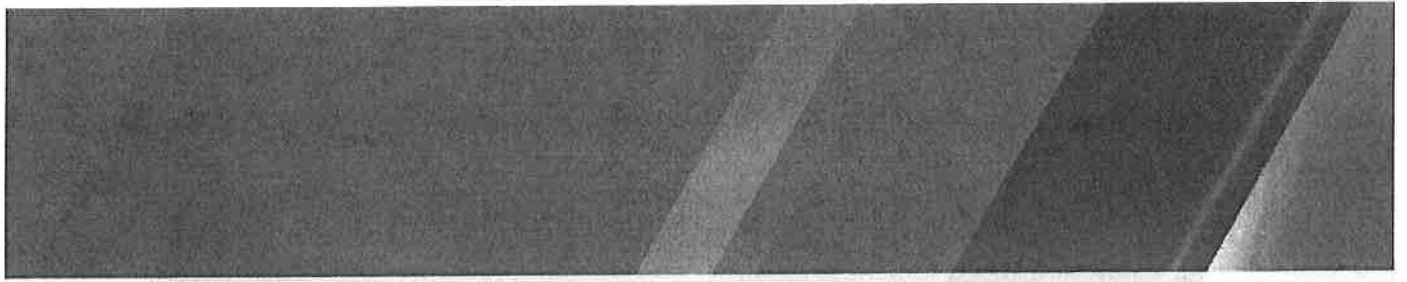
► IOWA: 898 Jackson St., Dubuque, IA 52001 P 563.542.9005
► WISCONSIN: 875 S. Chestnut St., Platteville, WI 53818 P 608.348.5355 F 608.348.5455
E mail@delta3eng.biz W www.delta3eng.biz

PRINCIPALS Scott Chyko, P.E. | Dan Dreessens, P.E. | Bart Nies, P.E.

EVERY ANGLE COVERED



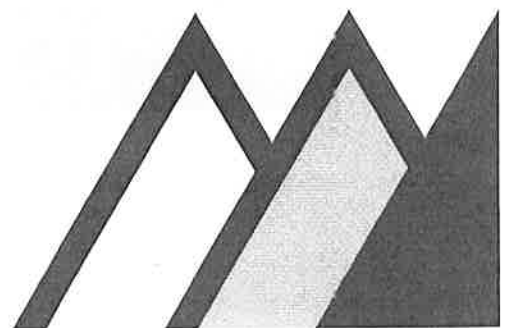
8 - **DELTA 3** - Richland Center Emergency Services Facility.



B

FIRM SERVICES

EVERY ANGLE COVERED





10 - **DELTA 3** - Richland Center Emergency Services Facility



FIRM SERVICES

Delta 3 Engineering specializes in civil and municipal engineering; structural engineering; architecture; historic preservation; land development and planning; grant writing and financial assistance; land surveying; and mechanical, plumbing, and lighting design services.

Architecture

We create innovative, code-compliant, and cost-effective solutions for new and historical building projects for both municipalities and private businesses.

Structural Engineering

Delta 3 provides design services for new commercial or residential structures, and the renovation and rehabilitation of existing structures.

Land Development and Planning

We assist public and private clients to create land development plans for underdeveloped, industrial, commercial, and residential areas.

Grant Writing and Financial Assistance

Delta 3 provides grant writing, financial assistance, and grant administration for municipal projects.

Civil/Municipal Engineering

We work in collaboration with municipalities to design, construct, and maintain public works infrastructure, such as streets, waste water, water, and storm water control systems.

Environmental Engineering

Delta 3 performs design, construction engineering, and project management services for municipal water, waste water, and storm water control systems.

Land Surveying

We offer a variety of surveying services, including boundary, ALTA retracement, and topographical surveys, as well as construction staking.

Mechanical Design

Delta 3 designs heating, ventilation, and air-conditioning (HVAC) systems to meet specific client needs.

Plumbing Design

We plan and design plumbing systems for many different types of structures—from commercial office and retail buildings to restaurants, breweries, and food-processing facilities.

Lighting Design

Delta 3 specializes in sensitively integrating architecture and lighting, maximizing daylighting, creatively utilizing standard fixtures, and offering solutions specific to the requirements of each project.

► IOWA: 898 Jackson St., Dubuque, IA 52001 P 563.542.9005
► WISCONSIN: 875 S. Chestnut St., Platteville, WI 53818 P 608.348.5355 F 608.348.5455
E mail@delta3eng.biz W www.delta3eng.biz

PRINCIPALS Scott Chyko, P.E. | Dan Dreessens, P.E. | Bart Nies, P.E.

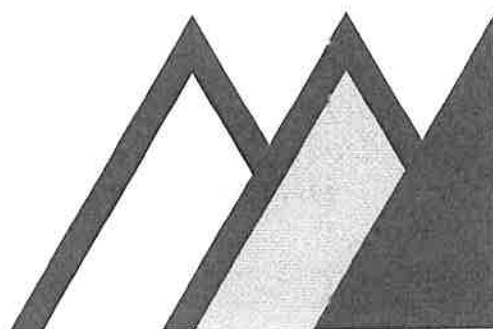
EVERY ANGLE COVERED



C

SIMILAR EXPERIENCE

EVERY ANGLE COVERED





13 - **DELTA 3** - Richland Center Emergency Services Facility



SIMILAR EXPERIENCE

Fennimore Fire and Rescue Facility

Overview:

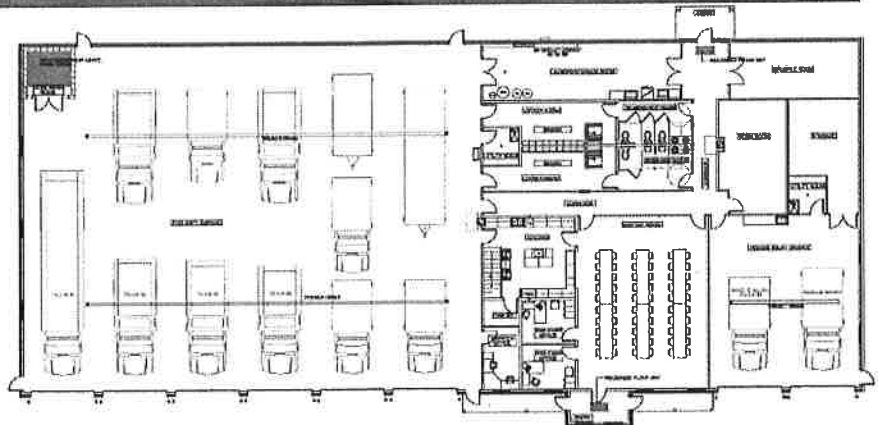
The Fennimore community was in need of a new facility to house their volunteer fire department and EMS squad. After a review of multiple building sites in the area, the final location was determined and Delta 3 was hired to complete the full design of the facility. The project involved the design of the 14,500 s.f. building which includes a fire truck maintenance bay, EMS truck bay, offices, locker rooms, restrooms, kitchen, and a community meeting room. Delta 3 completed the architectural design, civil engineering, structural engineering and mechanical, lighting and plumbing design for the facility.

Project team members:

Scott Chyko, PE – structural engineer

Dan Dreessens, PE – civil engineer, site design

Joe Bailie – MEP design, project management, construction administration



Client: City of Fennimore

Location: Fennimore, Wisconsin

Size: 14,500 SF

Completion: 2006

Construction Cost: \$888,100

Reference: Jim's Building Center 608-822-3741



SIMILAR EXPERIENCE

Livingston-Clifton Fire Department Addition

Overview:

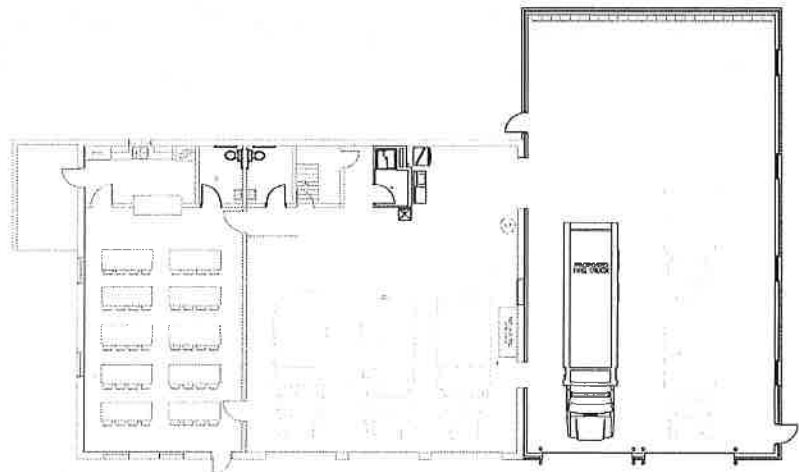
The Livingston Fire Department building was cramped and no longer provided enough space for the department's equipment. Delta 3 completed the design of a simple 2,860 s.f. addition to the existing 3,500 s.f. building that included two new truck bays with additional depth as well as updating the existing exterior with a brick façade. Delta 3 completed the architectural design, civil engineering, structural engineering and mechanical, lighting and plumbing design for the facility.

Project team members:

Scott Chyko, PE – structural engineer

Dan Dreessens, PE – civil engineer, site design

Joe Bailie – Mechanical and plumbing design, project management



Client: City of Livingston

Location: Livingston, Wisconsin

Size: 6,360 SF total (2,860 SF addition)

Completion: 2006

Construction Cost: \$200,000

Reference: Rock Church Construction 608-943-8157



SIMILAR EXPERIENCE

Jamestown Fire Department Addition

Overview:

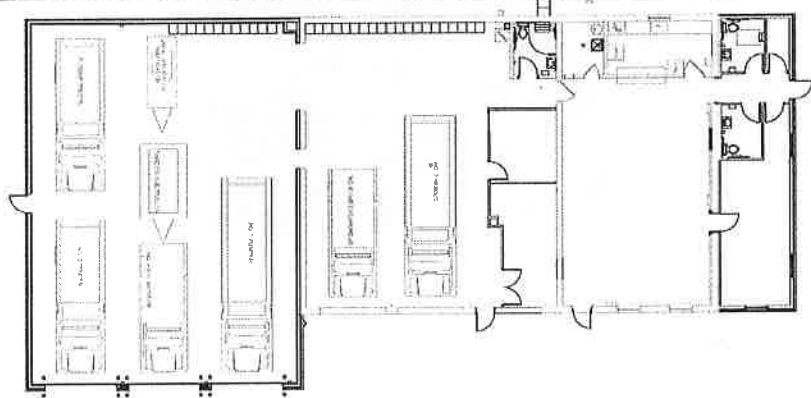
The Town of Jamestown had outgrown their current fire department and town hall facility and it was determined that an addition would be appropriate on the site. Delta 3 completed the site design to add a 19-stall parking lot on the south side of the building as well as the architectural design, structural engineering and mechanical, lighting and plumbing design to add onto the north and south sides of the existing building. Three additional truck bays were added to the south and office space with accessible restrooms was added to the north. Metal roofing, siding and masonry work was completed on the building exterior. The complete facility of 7,000 s.f. now boasts 5 truck bays, offices, storage and a community meeting room with a kitchen/food warming area.

Project team members:

Jake Haack, PE – structural engineer, project manager

Dan Dreessens, PE – civil engineer, site design

Joe Bailie – mechanical and plumbing design



Client: Town of Jamestown

Location: Kieler, Wisconsin

Size: 7,000 SF total (3,500 SF addition)

Completion: 2015

Construction Cost: \$582,000

Reference: Faber Runde, Chairman 608-568-7556



SIMILAR EXPERIENCE

SHULLSBURG COMMUNITY TOWNSEND CENTER

Overview:

The City of Shullsburg constructed a single masonry building to house many of the city services and amenities. The brick veneer building creates a landmark at the intersection of two main roads. The building houses a police station, EMS/rescue facility, community room/Senior Center, city offices, and the library. The combined program continues to serve the community population of approximately 1,300 people.

Project team members:

Scott Chyko, PE – structural engineer

Joe Bailie – MEP design, construction administration



Client: City of Shullsburg

Location: Shullsburg, Wisconsin

Size: 15,500 SF

Completion: 2002



SIMILAR EXPERIENCE

Mineral Point Police Station and City Garage

Overview:

Delta 3 was selected by the City of Mineral Point to review options for a combined police station and city garage in a location that was easily accessible. Conceptual designs and cost estimates were completed initially, with the City Council approving the construction of a new facility. The 15,000 square foot building houses the offices and break room for the police department, equipment and evidence storage, vehicle storage and impound area, as well as provides a community meeting space via a separate entrance. The city garage has ample space for city vehicles, offices, and equipment. Delta 3 completed the architectural design, civil engineering, structural engineering, and mechanical, lighting and plumbing design for the facility.

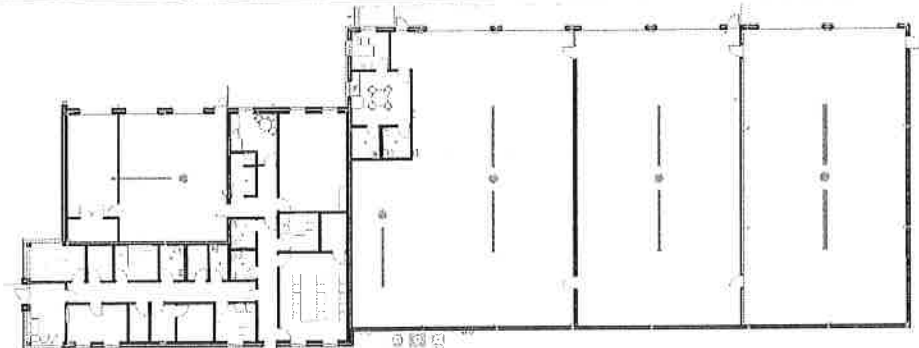
Project team members:

Tammy Black, AIA – architect, project manager

Jason Schweitzer, PE, SE – structural engineer

Bart Nies, PE – civil engineer, site design

Joe Bailie – MEP design



Client: City of Mineral Point

Location: Mineral Point, WI

Size: Police Station 4,400 sf City Garage 10,600 sf

Completion: 2020

Cost: \$1,900,000

Reference: Robert Weier, Police Chief, 608-987-2313

DELTA 3 - Richland Center Emergency Services Facility - 18



SIMILAR EXPERIENCE

Fire and EMS Facilities

Our Delta 3 team 3 has completed the design of numerous fire and EMS facilities throughout the region. Some additional facilities include:

Bloomington EMS

Bloomington Fire Station

Shullsburg EMS/Community Center

Shullsburg Fire Station

Avoca Rural Fire & EMS Facility

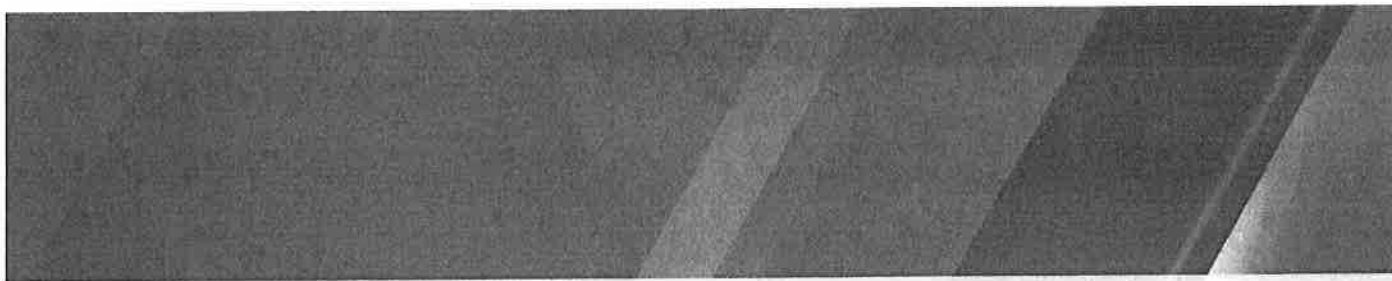
Platteville Fire Department - Alterations



Bloomington Fire Station



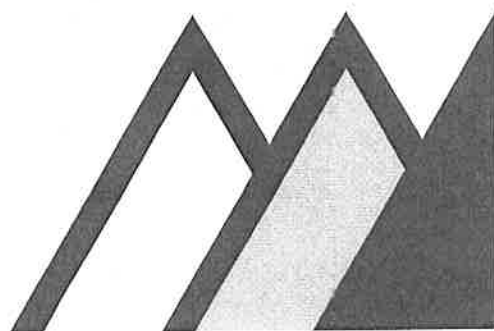
Shullsburg Fire Station



D

TEAM MEMBERS

EVERY ANGLE COVERED





The Delta 3 team of engineers and architects are dedicated to listening closely, communicating openly, designing efficiently, and providing superior construction administration services for you. We love what we do and look forward to working with you!



Platteville Office



Dubuque Office

21.- **DELTA 3** - Richland Center Emergency Services Facility



*Tammy Black, AIA
LEED Green Associate, NCARB*

Architect/ Project Manager

Education

BS Bachelor of Science
1997 North Dakota State University

BArch Bachelor of Architecture
1998 North Dakota State University

Experience

2014- Delta 3
1998-05 Miller Dunwiddie Architecture, Minneapolis

Registration/Certification

Registered Architect:

2001 Minnesota
2014 Wisconsin
2017 Illinois
2018 Iowa

2017 LEED Green Associate

Memberships/Organizations

Platteville Historic Preservation Commission - member
AIA American Institute of Architects
NCARB National Council of Architecture Registration Boards



Tammy is an Architect practicing in the areas of historic preservation and commercial construction. Prior to joining Delta 3 Engineering she worked in Minneapolis on many types of commercial, aviation, and historic preservation projects, ranging from a few million to over \$14 million.

Tammy has provided pre-design services, programming and space needs analysis, facility design services, project management and construction administration for public and private clients in Minnesota and Wisconsin. Her experience ranges from preservation and rehabilitation work to new construction in commercial, educational, municipal, offices, retail, clinics and warehouses. She regularly reviews building codes and focuses on performance-based envelope design.

Tammy enjoys volunteering in the community and serving on the Platteville Historic Preservation Commission. She enjoys working with clients to develop their ideas into reality.



Scott Chyko, PE

Structural Engineer/ Principal

Education

BS Bachelor of Science – Civil Engineering
1996 University of Wisconsin-Platteville

Experience

2003- Delta 3
1993-03 Blackhawk Engineering, Platteville

Registration/Certification

Registered Professional Engineer:
Wisconsin
Iowa
Ohio
Florida

Memberships/Organizations

ICC International Code Council
ASCE American Society of Civil Engineers
ACI American Concrete Institute
AISC American Institute of Steel Construction
Platteville Business Incubator - Secretary



Scott is co-owner and President of Delta 3 Engineering, Inc. in Platteville, Wisconsin. He is a Civil Engineer that practices in the areas of structural and geo-technical engineering, facilities improvement, facilities analysis, energy audits, and energy conservation analysis. He is responsible for overseeing Delta 3 Engineering's architectural and structural engineering division, as well as day to day operations of Delta 3 Engineering, Inc.

Scott has completed professional continuing education courses in seismic design, structural steel, heavy timber, reinforced concrete, and masonry design, facility thermal performance, Heating Ventilating and Air Conditioning Systems Design, Commercial Plumbing Systems Design, International Building Code analysis, and ADA compliance review.

Scott has provided space needs analysis, facility design services, structural engineering, and building thermal performance analysis for projects throughout Iowa, Wisconsin, Ohio, Minnesota, and Nebraska.



Jason Schweitzer, PE, SE

Structural Engineer

Education

BS Bachelor of Science – Civil Engineering
2011 University of Wisconsin-Platteville

Experience

2012- Delta 3

Registration/Certification

Registered Professional Engineer:
Wisconsin
Iowa
Illinois (SE)

Memberships/Organizations

ASCE American Society of Civil Engineers
AISC American Institute of Steel Construction



Jason is a Structural Engineer that practices in the areas of structural analysis, geotechnical and foundation engineering, facilities improvement, and facilities analysis.

Jason has completed professional continuing education courses in building performance, wood framed structures, and repair of existing reinforced concrete structures.

Jason has provided detailed structural analysis and design of facilities utilizing construction of a variety of methods and materials including multi-story wood framed buildings, masonry, cold-formed metal framed structures, pre-engineered metal building foundations, and structural steel moment and braced frames.

Jason has also provided structural evaluation and improvement of existing facilities, and drafting services for projects throughout Iowa and Wisconsin.



Joe Bailie

Construction Specialist/ MEP design

Education

AS Associates Degree of Architectural Technology
2002 Madison Area Technical College

Experience

2003- Delta 3
2001-03 Blackhawk Engineering, Platteville



Joe is a project manager and designer that practices in the areas of structural engineering, mechanical engineering, facility improvements, facility analysis, energy audits, and energy conservation. His years of construction experience are an asset to our team as he completes constructability reviews and quality control reviews of projects.

Joe has completed continuing education hours with the University of Wisconsin College of Engineering in Mechanical and Plumbing Systems Design.

His duties include planning, preliminary and final design, code analysis, preparation and coordination of construction plans and specifications, overall project management, building envelope analysis and construction review for numerous civil and municipal engineering projects throughout Wisconsin, Minnesota and Iowa.



Dan Dreessens, PE

Civil Engineer/ Principal

Education

BS Bachelor of Science – Civil Engineering
1996 University of Wisconsin-Platteville

Experience

2003- Delta 3
1992-03 Blackhawk Engineering, Platteville

Registration/Certification

Registered Professional Engineer:
Wisconsin
Illinois
Iowa - Pending

Memberships/Organizations

WVWA Wisconsin Wastewater Operators' Association
WSLS Wisconsin Society of Professional Land
Surveyors
ACSE American Society of Civil Engineers
PAIDC Platteville Area Industrial Development
Corporation
Platteville Regional Chamber of Commerce – Executive
Board
Platteville United Way – Board of Directors

Relevant Experience

FEMA Elevation Certificates/LOMA's
Flood Plain Studies
Bridge and Culvert Analysis
Storm Water Management
Storm Sewer System Design
State, County, and Local Road Design
Site/Topographical Surveys
Contracted Construction Staking
Easement Acquisition
Project Surveyor



Dan is co-owner and Vice-President of Delta 3 Engineering. Dan has completed professional engineering development hours in WINS_AMM, Construction Erosion Control Standards, Energy Efficiency in Water and Wastewater Systems, Storm Sewer System Design, Storm Water Detention Basin Design, Wastewater Treatment Plant Design, Lift Station and Pump Station Design, Water Chemistry, and HEC-RAS.

His professional responsibilities have included long-range and community planning; preliminary and final design/layout; grant-writing; cost estimating; construction document preparation; bid process administration; overall project management; meeting attendance; and construction engineering services, including construction staking, management, and observation for numerous infrastructure improvement projects. He is also responsible for the oversight and management of the surveying department.

Dan has performed these services for sanitary sewer collection system projects; water distribution system projects; storm water system projects; street infrastructure projects; recreational facilities' projects; and residential/commercial/industrial site development projects in several municipalities throughout Wisconsin, Iowa, and Illinois for both public and private clients.



James Reiter, P.L.S.

Professional Land Surveyor

Education

BS Bachelor of Science
1981 University of Wisconsin-River Falls

Experience

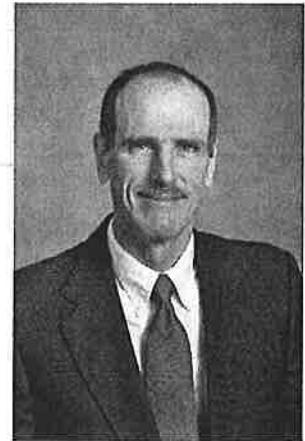
2016- Delta 3
2007-15 Walter P. Thompson, Honolulu
2005-07 City of Tucson, Tucson, AZ
2003-05 Washington County, MN

Registration/Certification

Professional Land Surveyor:
Wisconsin
Hawaii
Illinois Land Surveyor-in-Training

Memberships/Organizations

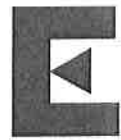
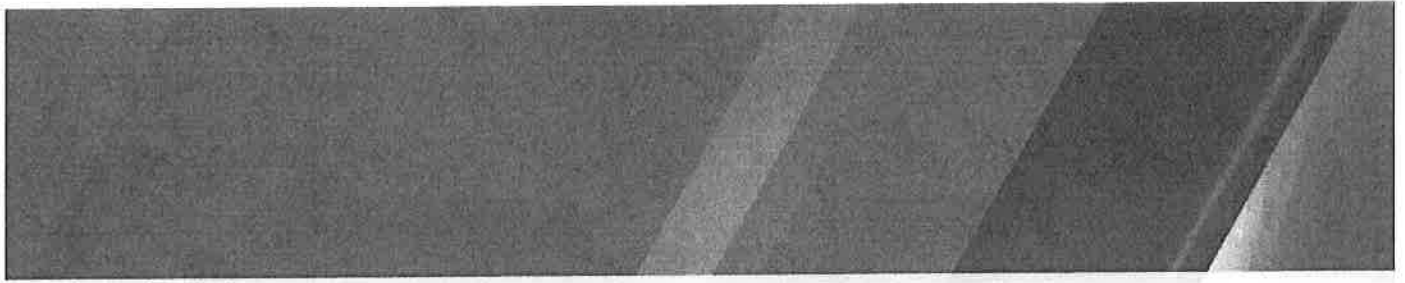
WSLS Wisconsin Society of Land Surveyors



Jim is a Professional Land Surveyor who is registered in the state of Wisconsin and Hawaii.

His duties as a Project Surveyor have included: Certified Survey Maps, ALTA.NSPS Land Title Surveys, Contracted Construction Staking, and Right-of-Way Plats.

Jim has performed these services for Public, Private, and State Agency Projects throughout Wisconsin, Hawaii, Arizona, and Illinois.



PROOF OF INSURANCE

EVERY ANGLE COVERED





29 - **DELTA 3** - Richland Center Emergency Services Facility



CERTIFICATE OF LIABILITY INSURANCE

DATE (MM/DD/YYYY)

10/27/2020

THIS CERTIFICATE IS ISSUED AS A MATTER OF INFORMATION ONLY AND CONFERS NO RIGHTS UPON THE CERTIFICATE HOLDER. THIS CERTIFICATE DOES NOT AFFIRMATIVELY OR NEGATIVELY AMEND, EXTEND OR ALTER THE COVERAGE AFFORDED BY THE POLICIES BELOW. THIS CERTIFICATE OF INSURANCE DOES NOT CONSTITUTE A CONTRACT BETWEEN THE ISSUING INSURER(S), AUTHORIZED REPRESENTATIVE OR PRODUCER, AND THE CERTIFICATE HOLDER.

IMPORTANT: If the certificate holder is an ADDITIONAL INSURED, the policy(ies) must have ADDITIONAL INSURED provisions or be endorsed. If SUBROGATION IS WAIVED, subject to the terms and conditions of the policy, certain policies may require an endorsement. A statement on this certificate does not confer rights to the certificate holder in lieu of such endorsement(s).

PRODUCER

Busch Insurance Agency, Inc.
PO Box 757 147 Keystone Pkwy #107
Platteville, WI 53818

CONTACT NAME: Teresa Hirsch
PHONE (A/C, No, Ext): (608)348-2601 FAX (A/C, No): (608)348-2603
E-MAIL ADDRESS: teresa@buschinsurance.com

INSURED

DELTA 3 ENGINEERING, INC.
875 S Chestnut St
Platteville, WI 53818

INSURER(S) AFFORDING COVERAGE		NAIC #
INSURER A:	Pekin Insurance Company	24228
INSURER B:	Pekin Insurance Company	
INSURER C:		
INSURER D:		
INSURER E:		
INSURER F:		

COVERAGES

CERTIFICATE NUMBER: 00001647-1741397

REVISION NUMBER: 71

THIS IS TO CERTIFY THAT THE POLICIES OF INSURANCE LISTED BELOW HAVE BEEN ISSUED TO THE INSURED NAMED ABOVE FOR THE POLICY PERIOD INDICATED. NOTWITHSTANDING ANY REQUIREMENT, TERM OR CONDITION OF ANY CONTRACT OR OTHER DOCUMENT WITH RESPECT TO WHICH THIS CERTIFICATE MAY BE ISSUED OR MAY PERTAIN, THE INSURANCE AFFORDED BY THE POLICIES DESCRIBED HEREIN IS SUBJECT TO ALL THE TERMS, EXCLUSIONS AND CONDITIONS OF SUCH POLICIES. LIMITS SHOWN MAY HAVE BEEN REDUCED BY PAID CLAIMS.

INSR LTR	TYPE OF INSURANCE	ADDL INSD	SUBR WVD	POLICY NUMBER	POLICY EFF (MM/DD/YYYY)	POLICY EXP (MM/DD/YYYY)	LIMITS
A	<input checked="" type="checkbox"/> COMMERCIAL GENERAL LIABILITY <input type="checkbox"/> CLAIMS-MADE <input checked="" type="checkbox"/> OCCUR GEN'L AGGREGATE LIMIT APPLIES PER: <input type="checkbox"/> POLICY <input checked="" type="checkbox"/> PROJECT <input type="checkbox"/> LOC OTHER:			CL0023871	11/18/2020	11/18/2021	EACH OCCURRENCE \$ 1,000,000 DAMAGE TO RENTED PREMISES (Ea occurrence) \$ 100,000 MED EXP (Any one person) \$ 5,000 PERSONAL & ADV INJURY \$ 1,000,000 GENERAL AGGREGATE \$ 2,000,000 PRODUCTS - COMP/OP AGG \$ 2,000,000
B	AUTOMOBILE LIABILITY <input checked="" type="checkbox"/> ANY AUTO <input checked="" type="checkbox"/> OWNED AUTOS ONLY <input checked="" type="checkbox"/> SCHEDULED AUTOS <input checked="" type="checkbox"/> HIRED AUTOS ONLY <input checked="" type="checkbox"/> NON-OWNED AUTOS ONLY			00P600903	11/18/2020	11/18/2021	COMBINED SINGLE LIMIT (Ea accident) \$ BODILY INJURY (Per person) \$ 1,000,000 BODILY INJURY (Per accident) \$ 1,000,000 PROPERTY DAMAGE (Per accident) \$ 1,000,000
B	<input checked="" type="checkbox"/> UMBRELLA LIAB <input type="checkbox"/> OCCUR <input type="checkbox"/> EXCESS LIAB <input checked="" type="checkbox"/> CLAIMS-MADE DED RETENTION \$			005892604	11/18/2020	11/18/2021	EACH OCCURRENCE \$ 2,000,000 AGGREGATE \$ 2,000,000
B	WORKERS COMPENSATION AND EMPLOYERS' LIABILITY ANY PROPRIETOR/PARTNER/EXECUTIVE OFFICER/MEMBER EXCLUDED? (Mandatory in NH) If yes, describe under DESCRIPTION OF OPERATIONS below	Y/N <input checked="" type="checkbox"/> N	N/A	005599468	11/18/2020	11/18/2021	<input checked="" type="checkbox"/> PER STATUTE <input type="checkbox"/> OTHER E.L. EACH ACCIDENT \$ 500,000 E.L. DISEASE - EA EMPLOYEE \$ 500,000 E.L. DISEASE - POLICY LIMIT \$ 500,000

DESCRIPTION OF OPERATIONS / LOCATIONS / VEHICLES (ACORD 101, Additional Remarks Schedule, may be attached if more space is required)

CERTIFICATE HOLDER

RICHLAND COUNTY EMERGENCY MANAGEMENT OFFICE
181 W SEMINARY ST
Richland Center, WI 53581

CANCELLATION

SHOULD ANY OF THE ABOVE DESCRIBED POLICIES BE CANCELLED BEFORE THE EXPIRATION DATE THEREOF, NOTICE WILL BE DELIVERED IN ACCORDANCE WITH THE POLICY PROVISIONS.

AUTHORIZED REPRESENTATIVE

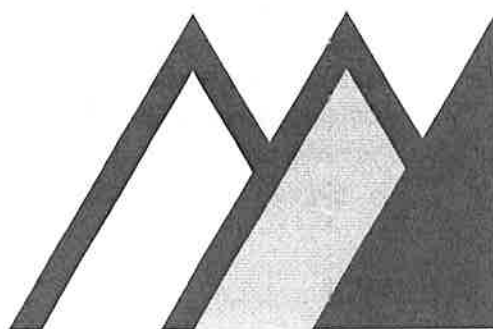
(TKH)

© 1988-2015 ACORD CORPORATION. All rights reserved.



FEES & COMPENSATION

EVERY ANGLE COVERED





FEES & COMPENSATION

ENGINEERING AND ARCHITECTURAL SERVICES - NEW EMERGENCY SERVICES FACILITY PROJECT – RICHLAND CENTER

Site Plans and Specifications = \$6,629

*Complete topographical survey of the project site
Design and draft site utilities plan, erosion control plan and storm water management plan
Design and draft site plan indicating parking and access drives
Prepare site details and specifications
Prepare Notice of Intent for DNR submittal*

Exterior Building Envelope Plans and Specifications = \$11,445

*2015 International Building Code analysis
2010 ASCE 7-10 Loading Analysis
Structural design, calculation review, detailing and drafting of concrete footings/foundations/floor
Structural design, calculation review, detailing and drafting of wood structure
Design development and drafting of exterior elevations and details
Drafting of facility cross sections
Preparation of specifications for exterior envelope*

Interior Building Plans and Specifications = \$9,465

*2015 International Building Code analysis and accessibility review
Schematic Design and Interior Planning (up to 2 iterations)
Design Meetings with involved parties (up to 2 meetings)
Design and drafting of code plans, floor plans, reflected ceiling plans, sections, details, casework elevations, doors and windows sections and interior finish schedule.
Design and drafting of interior framing plans*

Mechanical, Electrical, and Plumbing Plans and Specifications = \$6,610

*2015 International Energy Conservation Code Analysis for Mechanical and Lighting Design
Thermal Performance Calculations for the mechanical system
Design and drafting services for the mechanical system and associated equipment schedules
Electrical outlet locations and special power connections
Emergency egress lighting design and drafting
Facility lighting system design and drafting
Lighting fixture equipment schedules and specifications
Plumbing design and drafting services for the drain/waste/vent system
Plumbing design and drafting services for the water distribution system
Plumbing equipment schedules and specifications*

Final Grading, Drainage and Landscaping Plans and Specifications = \$2,880

Design and draft site grading plan

Design and draft landscaping plan

Prepare grading and landscaping details and specifications

Plan submittal to State for Approval = \$400 *(State submittal fees additional cost)*

Building and HVAC Plans submittal preparation

Plumbing Plans submittal preparation

Bidding and Construction Administration Services = \$9,280 *(estimate – will be billed Time & Material)*

Advertisement for Bids

Contract documents preparation

Distribution of bid documents (electronic)

Bids review and contract award recommendation

Construction correspondence

Contractor pay request processing

Shop drawings and construction submittals review

Construction progress meetings attendance (6 meetings total)

Construction site staking

Construction site inspections/observations (3 structural inspections + 6 observations)

Preparation of substantial completion punchlist

Project Closeout and State Compliance Statement Documentation

TOTAL FEES FOR SERVICES NOTED ABOVE = \$46,709

(As stated in the RFP all items are open to negotiation until contracts are final.)

Additional services that can be included:

Cost estimating services

Additional site visits and meetings at \$400/meeting (includes travel time)

2020 Delta 3 Rate Schedule:

- Firm Principal	\$130/hour
- Architect	\$110/hour
- Structural Engineer (SE)	\$110/hour
- Civil Engineer	\$95/hour
- MEP Designer	\$90/hour
- Drafting	\$85/hour
- Surveyor	\$75/hour

WE PRIORITIZE COMMUNICATION



WE DESIGN WITH YOU IN MIND



WE BUILD LONG-LASTING RELATIONSHIPS